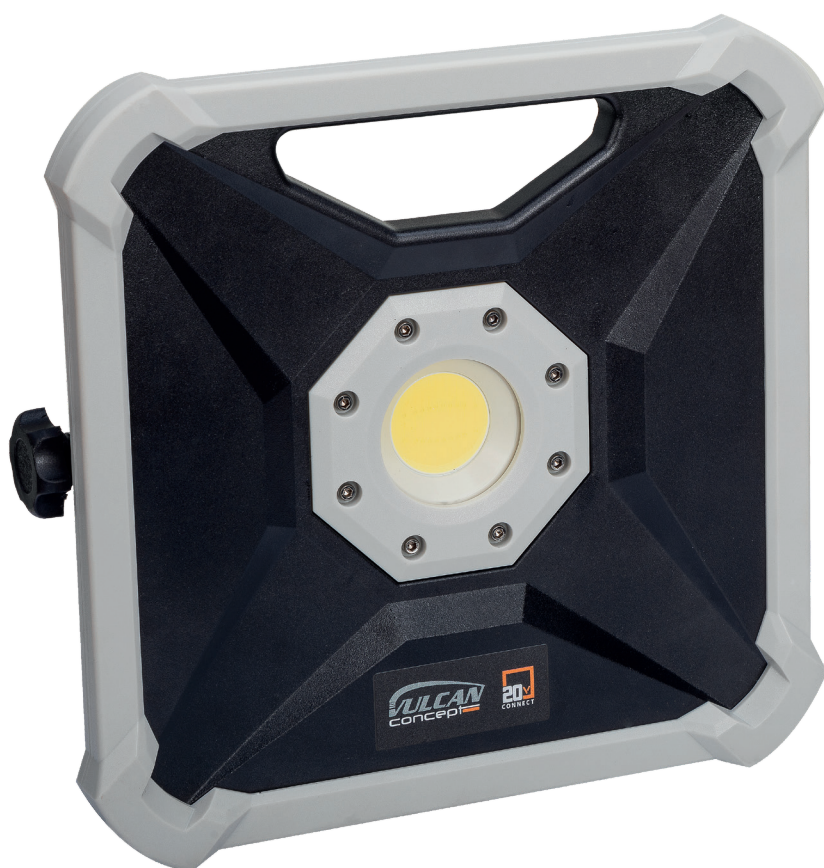


PRODUCT FEATURES

Powered by universal system battery 20V.
 Luminous flux (max.) 800 lm/1600 lm.
 2 light modes (50% - 100%).
 Light angle 100 - 120°.
 Case made from aluminum.
 Model without battery and charger.



20V
 d.c.

CCT
 5500°K
 6500°K

CRI
 >80

900 lm
 1800 lm

CE

Code	VJL13
rated voltage	20 V
equipment	without charger; battery included
carton quantities	8